

Parts Manual



12-16BE01
12-16BP01
12-11BE01
12-11BP01

B-165
B-165
B-115
B-115

TWIN AUTOMATIC
TWIN 5-SPEED
AUTOMATIC
5-SPEED

WHEEL HORSE
lawn & garden tractors

part number 810323R1

PRICE: \$4.00

PRINTED IN U.S.A. 09/82

LIST OF ILLUSTRATIONS

Title	Figure Number	Page
Section 3		
5-Speed Transmission	3-1	2
Section 4		
Transaxle	4-1	4
Automatic Transmission	4-2	6
Section 5		
Front Axle and Steering (Mower Hanger)	5-1	8
Section 6		
Brake and Clutch Linkage - 5-Speed Models	6-1	10
Clutch, Brake and Speed Control Linkage	6-2	12
Clutch, Brake and Speed Control Linkage	6-3	14
Section 7		
Attachment Lift	7-1	16
Section 8		
Frame, Sheet Metal and Covers	8-1	18
Frame, Sheet Metal and Covers	8-2	20
Section 9		
Engine	9-1	22
Section 10		
Fuel and Exhaust Systems	10-1	24
Section 11		
Electrical System	11-1	26
Section 13		
Wheels and Tires	13-1	30
Section 14		
Drive Belt and Pulleys - 5 Speed Models	14-1	32
Drive Belt and Pulleys - Automatic Models	14-2	34
PTO Clutch	14-3	36
Section 15		
Seat and Suspension	15-1	38
Decals, Miscellaneous	15-2	40
Section 17		
Wiring Diagram	17-1	42
Section 18		
Service Information	18-1	43

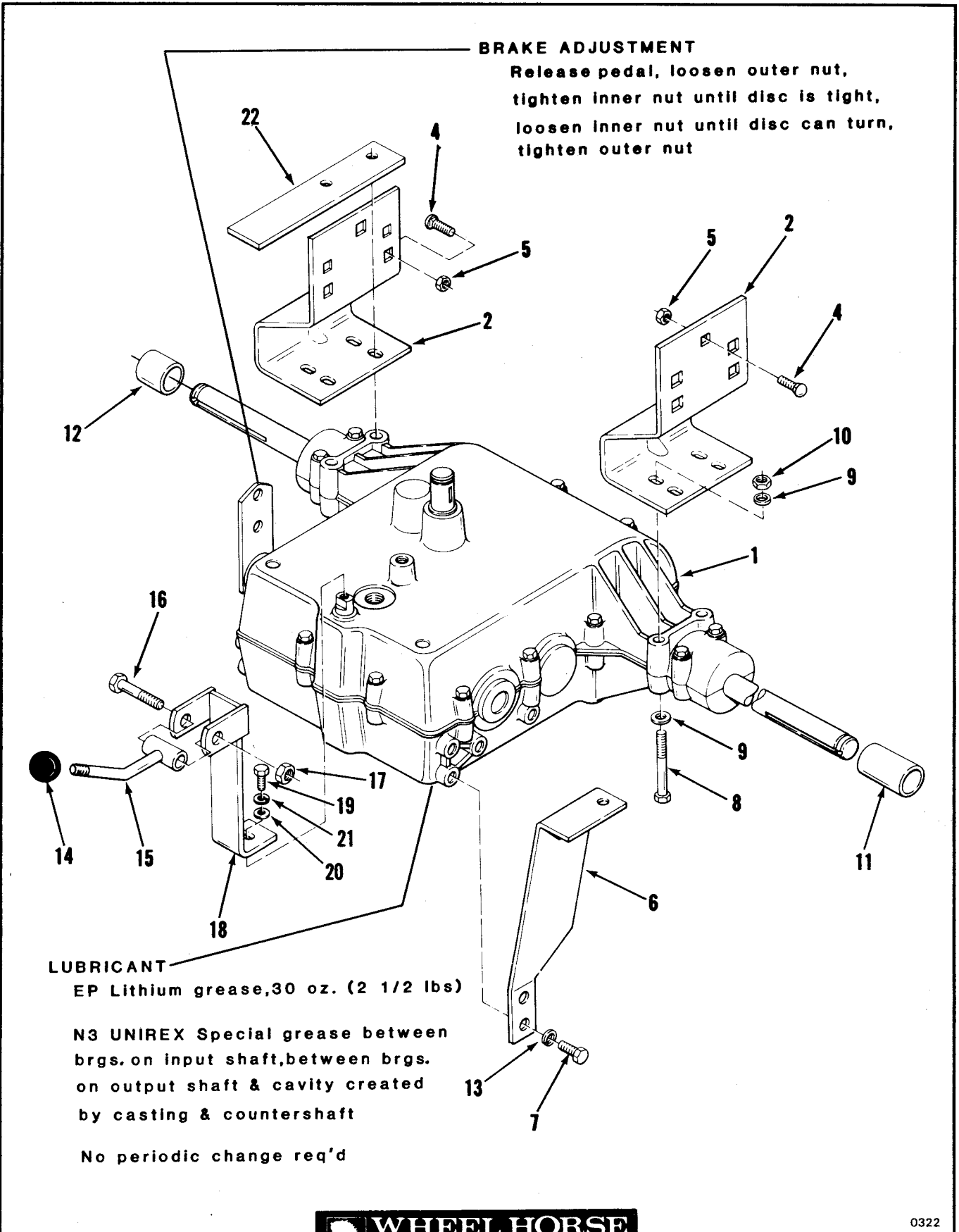


Figure 3-1

5-Speed Transmission

Item	Part Number	Description		
			Automatic	5-Speed
		Figure 3-1		
		5-SPEED TRANSMISSION		
1	108833*	Transmission - Peerless Model 801-002 or 819 (Early Production)		1
1	109920*	Transmission - Peerless Model 822 (Late Production)		1
2	108793	Bracket - Rear Axle		2
4	900036	Carriage Bolt 5/16-18 X 1		6
5	915112	Esllok Nut 5/16-18		6
6	108792	Torque Strap		1
7	926720	S.T. Bolt 5/16-18 X 3/4		2
8	908025	Bolt 5/16-18 X 2 1/2		4
9	920008	Washer 5/16 SAE		8
10	915112	Esllok Nut 5/16-18		4
11	108421	Axle Spacer LH		1
12	108420	Axle Spacer RH		1
13	920082	Lockwasher 5/16		2
14	108758	Knob		1
15	109638	Shift Rod		1
16	908040	Bolt 3/8-16 X 2 1/2		1
17	915113	Esllok Nut 3/8-16		1
18	109492	Shift Lever - Lower		1
19	908153	Bolt 1/4-28 X 7/8		1
20	104869	Special Washer		1
21	920081	Lockwasher 1/4		1
22	108396	Brake Stop Bar		1
		*Order Replacement Parts or Complete Assembly Through Manufacturer's Distribution System, Using Model/Spec. Number Shown.		
		WHEEL HORSE Part Number Is Listed For Cross-Reference Purposes Only; Item <u>Is Not Available</u> Through WHEEL HORSE.		

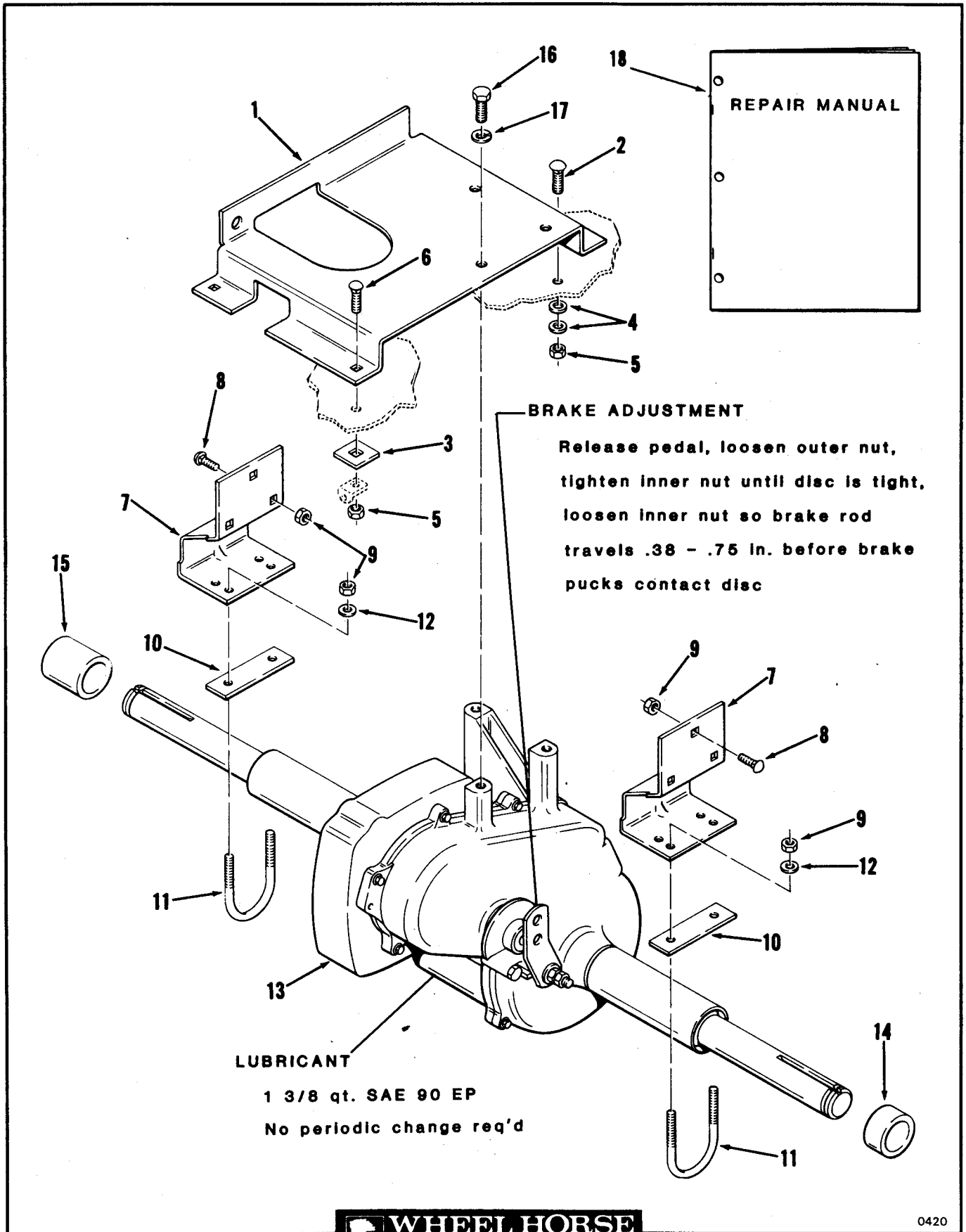


Figure 4-1 Transaxle

Item	Part Number	Description		
			Automatic	5-Speed
<p>Figure 4-1 TRANSAXLE</p>				
1	109402	Differential Support		1
2	900038	Carriage Bolt 5/16-18 X 1		2
3	106874	Pad		2
4	920008	Washer 5/16 SAE		4
5	915112	Eslok Nut 5/16-18		4
6	900038	Carriage Bolt 5/16-18 X 1		2
7	109388	Bracket		2
8	900036	Carriage Bolt 5/16-18 X 5/8		6
9	915112	Eslok Nut 5/16-18		10
10	107558	Spacer		2
11	109381	U-Bolt		2
12	920008	Washer 5/16 SAE		4
13	109390*	Transaxle - Peerless Model 1320		1
14	109393	Axle Spacer LH		1
15	109394	Axle Spacer RH		1
16	908034	Bolt 3/8-16 X 1		3
17	920083	Lockwasher 3/8		3
<p>*Order Replacement Parts or Complete Assembly Through Manufacturer's Distribution System, Using Model/Spec. Number Shown.</p> <p>WHEEL HORSE Part Number is Listed For Cross-Reference Purposes Only; Item <u>Is Not Available</u> Through WHEEL HORSE.</p>				

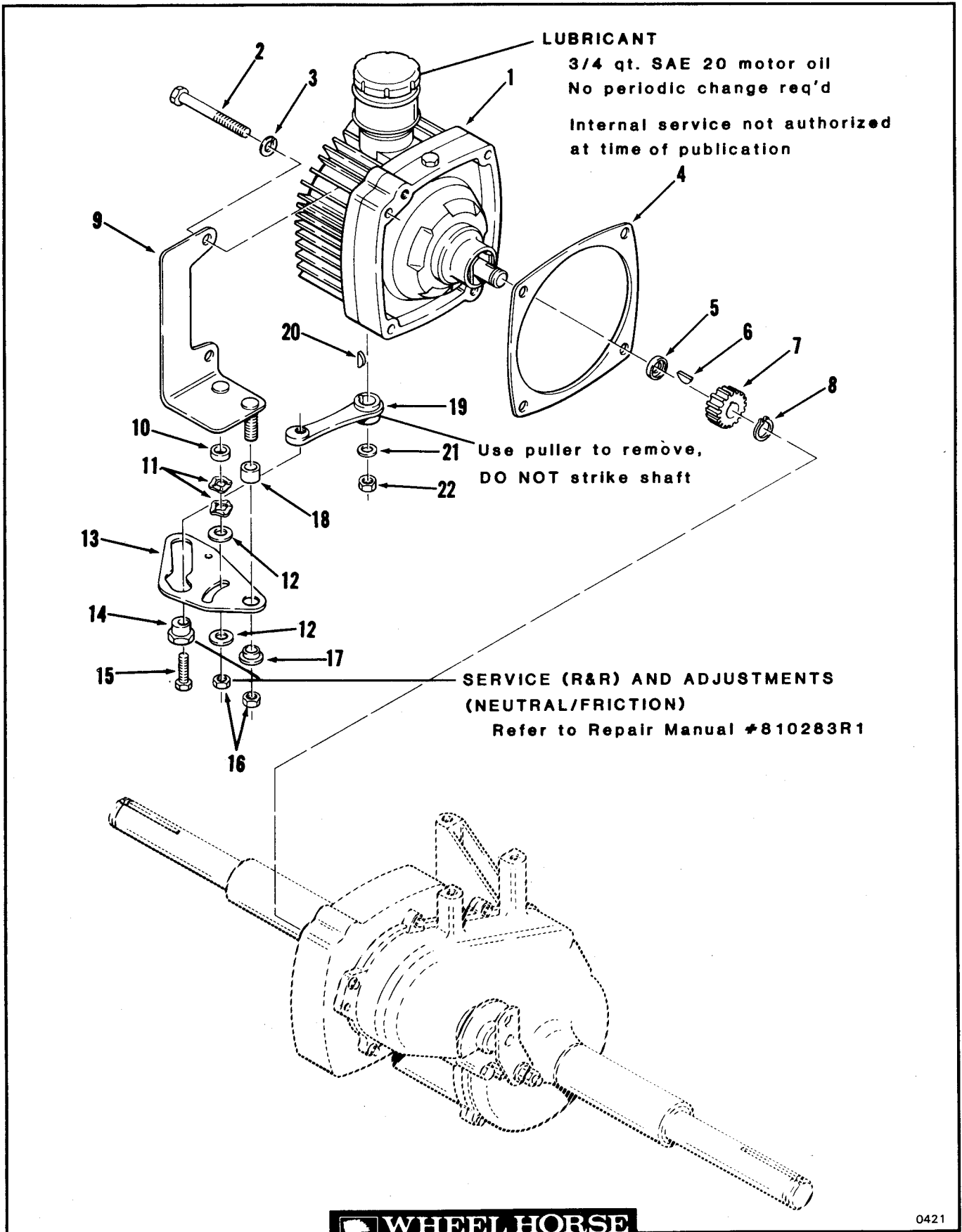


Figure 4-2 Automatic Transmission

Item	Part Number	Description	5-Speed	
			Automatic	
Figure 4-2				
AUTOMATIC TRANSMISSION				
1	109352	Pump & Motor	1	
2	908042	Bolt 3/8-16 X 3	4	
3	920083	Lockwasher 3/8	4	
4	7951	Gasket	1	
5	109447	Spacer	1	
6	937082	Woodruff Key 1/8 X 1/2	1	
7	109446	Gear 12 Tooth	1	
8	936122	Snapping	1	
9	109384	Control Plate	1	
10	108327	Spacer (Short)	1	
11	100365	Washer - Spring	2	
12	100305	Washer - Friction	2	
13	108333	Cam - Speed Control	1	
14	106661	Eccentric Cam	1	
15	908019	Eslok Bolt 5/16-18 X 1	1	
16	108881	Lock Nut 3/8-16 Hi-Tensile	2	
17	100309	Spacer	1	
18	108326	Spacer (Long)	1	
19	109383	Cam Follower Arm	1	
20	937082	Woodruff Key 1/8 X 1/2	1	
21	920009	Washer 3/8 SAE	1	
22	915113	Eslok Nut 3/8-16	1	

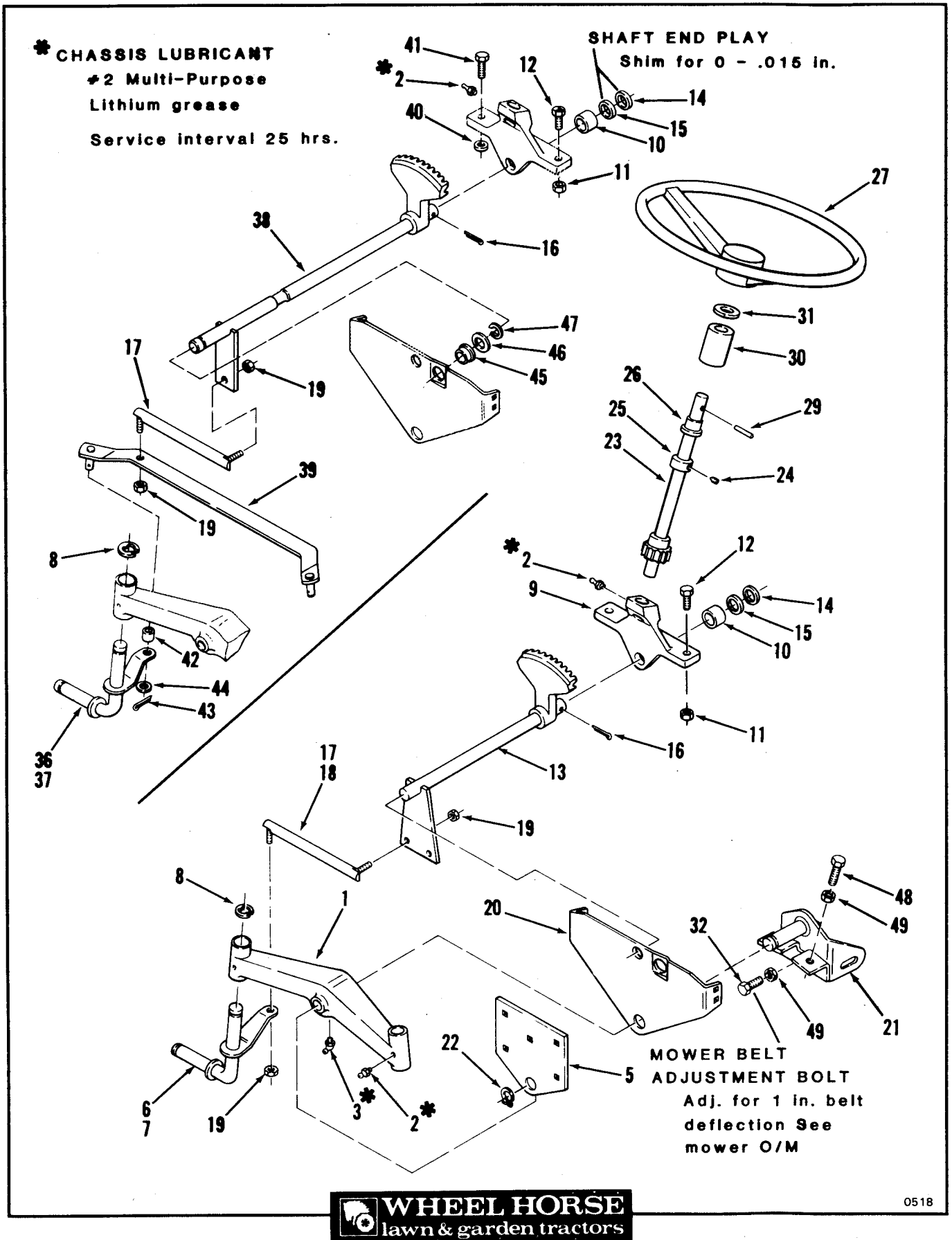
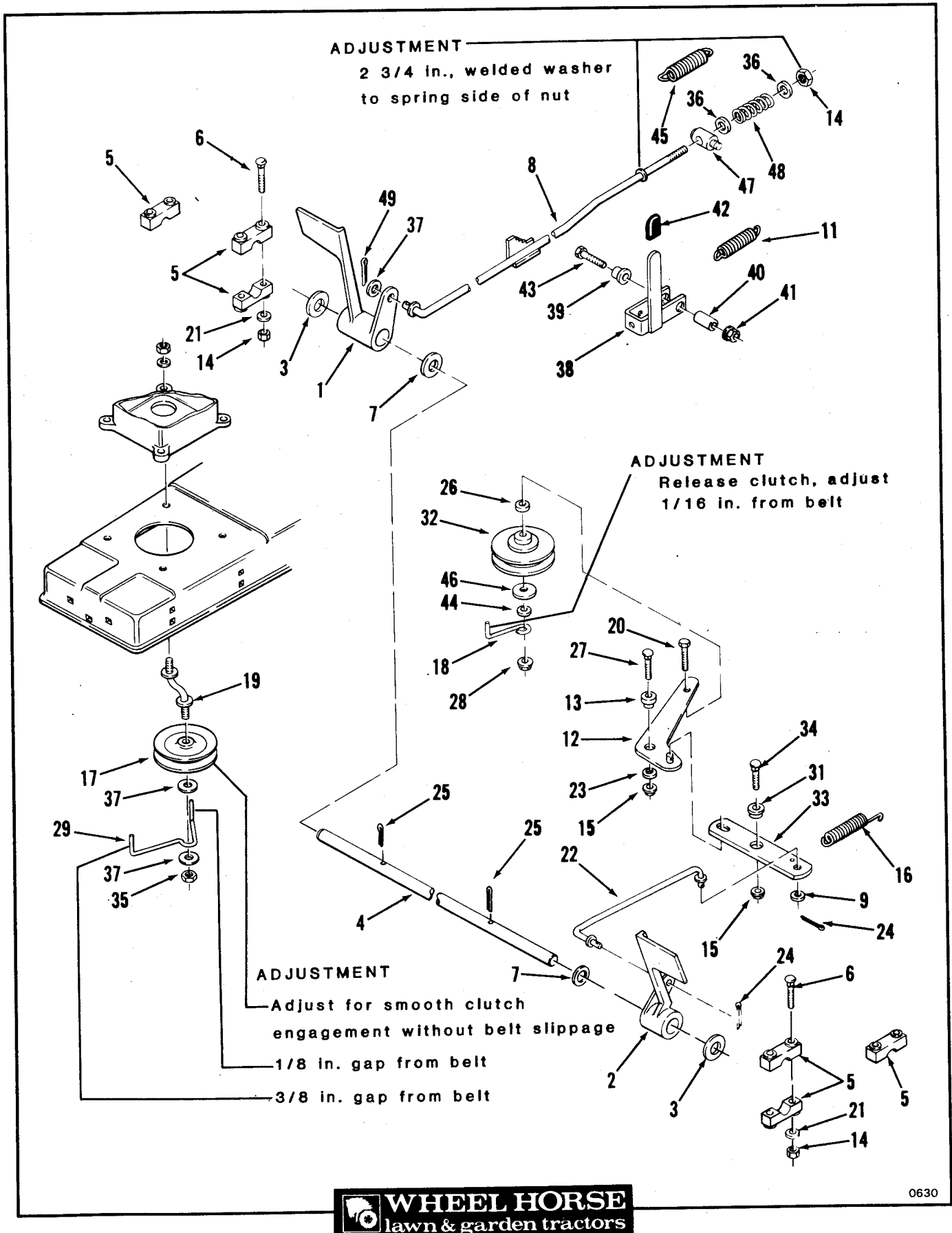


Figure 5-1 Front Axle and Steering (Mower Hanger)

Item	Part Number	Description	Transmission	
			Automatic	5-Speed
Figure 5-1 FRONT AXLE AND STEERING (Mower Hanger)				
1	106199	Axle - Front	1	1
2	1030	Grease Fitting	3	3
3	1481	Grease Fitting	1	1
5	108910	Plate - Front Axle	1	1
6	106302	Assy - Front Spdl RH B-115 Only	1	1
7	106303	Assy - Front Spdl LH B-115 Only	1	1
8	104822	Retaining Ring 3/4	2	2
9	109733	Support	1	1
10	6397	Bushing	1	1
11	915113	Esllok Nut 3/8-16	2	2
12	908034	Bolt 3/8-16 X 1	2	2
13	106310	Assy - Strg Shft Lower B-115 Only	1	1
14	5210	Shim Washer .015	1	1
15	1278	Shim Washer .050	2	2
16	932035	Cotter Pin 3/16 X 1 1/4	1	1
17	1772	Ball Joint Assy RH	1	1
18	1773	Ball Joint Assy LH B-115 Only	1	1
19	915002	Esllok Nut 3/8-24	4	4
20	108909	Support - Front Axle	1	1
21	109252	Front Hanger (Mower)	1	1
22	104822	Retaining Ring 3/4	1	1
23	106311	Assy - Strg. Shft. Upper	1	1
24	909848	Cup Pt Set Screw 1/4-20 X 1/4	1	1
25	1085	Shaft Collar	1	1
26	101442	Bushing	1	1
27	106055	Steering Wheel	1	1
29	933221	Spirol Pin 1/4 X 2	1	1
30	108252	Collar	1	1
31	7896	Bowed Washer	1	1
32	911424	Bolt 3/8-16 X 2 Full Thread	1	1
36	108224	Assy - Front Spdl RH B-165 Only	1	1
37	108223	Assy - Front Spdl LH B-165 Only	1	1
38	108227	Assy Strg Shft Lower B-165 Only	1	1
39	108230	Tie Rod B-165 Only	1	1
40	920242	Special Washer B-165 Only	1	1
41	908034	Bolt 3/8-16 X 1 B-165 Only	1	1
42	5943	Spacer B-165 Only	2	2
43	932017	Cotter Pin 1/8 X 1 B-165 Only	2	2
44	920242	Special Washer B-165 Only	2	2
45	106950	Bushing B-165 Only	1	1
46	920219	Special Washer B-165 Only	1	1
47	108226	Crescent Ring B-165 Only	1	1
48	908035	Bolt 3/8-16 X 1 1/4	2	2
49	915236	Jam Nut 3/8-16	3	3



0630

Figure 6-1

Brake and Clutch Linkage - 5-Speed Models

Item	Part Number	Description	5-Speed	
			Automatic	
Figure 6-1 BRAKE AND CLUTCH LINKAGE - 5-SPEED MODELS				
1	108602	Pedal - Brake		1
2	108601	Pedal - Clutch		1
3	920261	Special Washer		2
4	108279	Shaft - Pedal		1
5	106585	Block Pivot		6
6	900041	Carriage Bolt 5/16-18 X 1 3/4		4
7	920215	Special Washer		2
8	108797	Brake Rod		1
9	920008	Washer 5/16		1
11	103628	Spring		1
12	106304	Idler Arm		1
13	106203	Spacer - Idler Arm		1
14	915112	Eslok Nut 5/16-18		5
15	102809	Flange Locknut 3/8-16		2
16	6533	Clutch Spring		1
17	8205	"V" Idler Pulley		1
18	103408	Belt Guide - Flat Idler		1
19	108923	Rod		1
20	908039	Bolt 3/8-16 X 2 1/4		1
21	920008	Washer 5/16 SAE		4
22	106202	Rod - Clutch		1
23	920249	Special Washer		1
24	932016	Cotter Pin 1/8 X 3/4		2
25	932025	Cotter Pin 5/32 X 1		2
26	104525	Spacer - Flat Idler		1
27	900066	Carriage Bolt 3/8-16 X 1 3/4		1
28	102809	Flange Locknut 3/8-16		1
29	108511	Belt Guide "V" Idler		1
31	9475	Spacer - Clutch Bar		1
32	MW8821	Flat Idler Pulley		1
33	106382	Bar - Clutch		1
34	900064	Carriage Bolt 3/8-16 X 1 1/4		1
35	915113	Eslok Nut 3/8-16		1
36	920038	Washer 5/16 U.S.		2
37	920039	Washer 3/8 U.S.		3
38	106300	Parking Brake Lever		1
39	101765	Bushing		1
40	102025	Spacer - Parking Brake		1
41	102809	Flange Locknut 3/8-16		1
42	6820	Grip		1
43	908038	Bolt 3/8-16 X 2		1
44	920009	Washer 3/8 SAE		1
45	107788	Spring		1
46	2844	Special Washer		1
47	6739	Trunnion		1
48	7602	Spring		1
49	932008	Cotter Pin 3/32 X 3/4		1

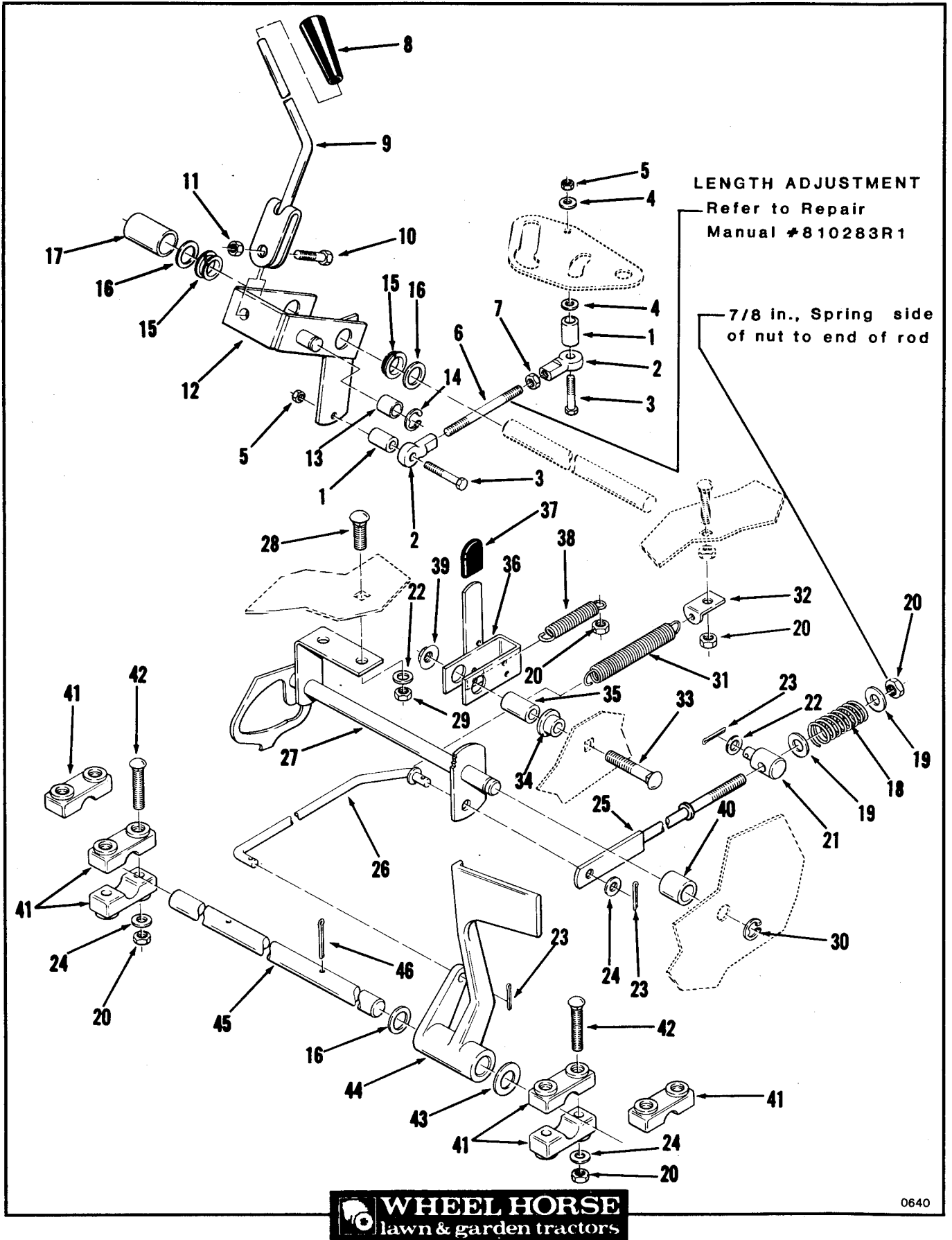
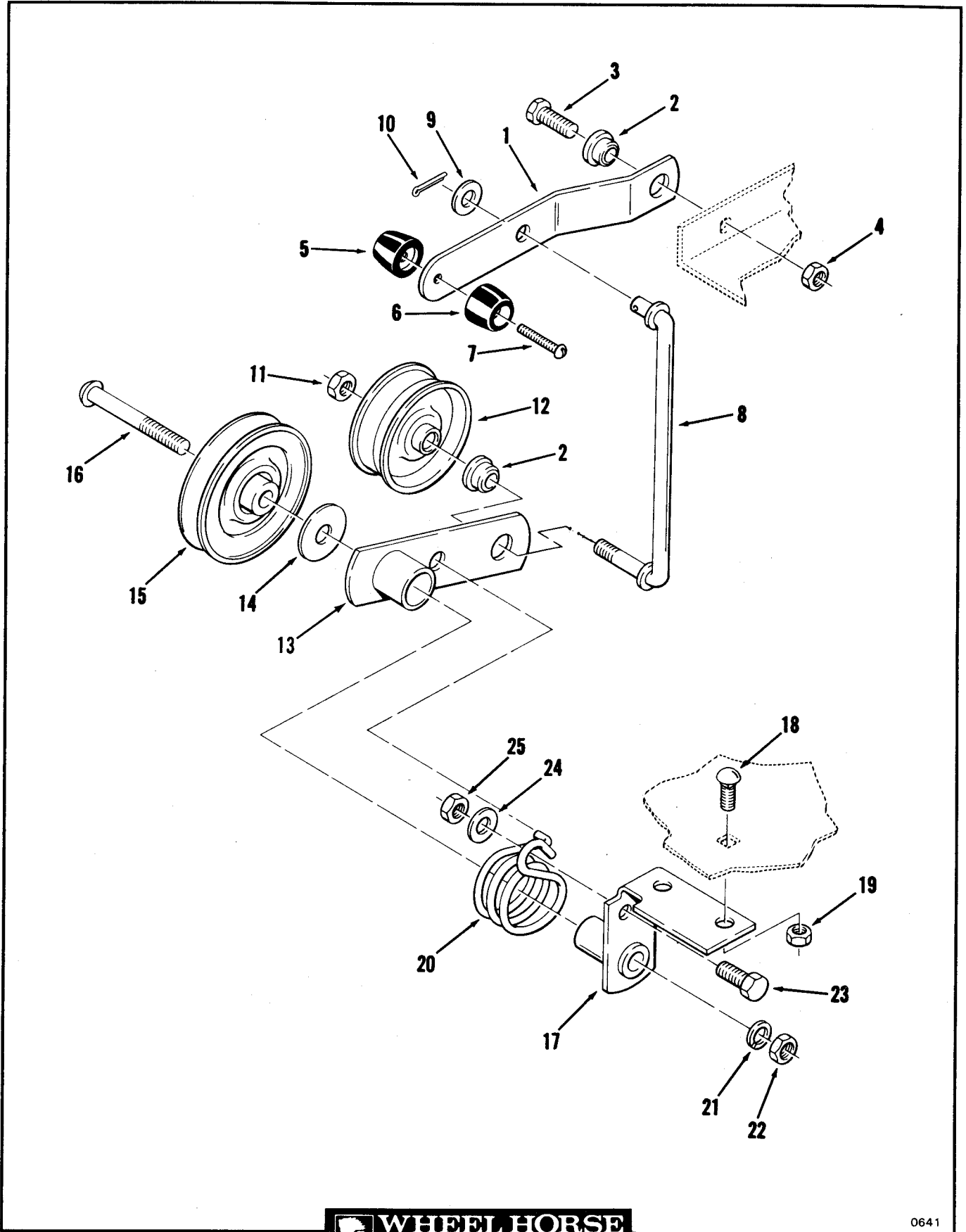


Figure 6-2

Clutch, Brake and Speed Control Linkage

Item	Part Number	Description	5-Speed	
			Automatic	
Figure 6-2 CLUTCH, BRAKE AND SPEED CONTROL LINKAGE				
1	100304	Spacer	2	
2	108905	Rod End	2	
3	908007	Bolt 1/4-20 X 1 1/2	2	
4	920007	Washer 1/4 SAE	2	
5	915111	Eslok Nut 1/4-20	2	
6	109413	Control Rod	1	
7	915083	Jam Nut 1/4-28	1	
8	6129	Shift Knob	1	
9	109396	Control Arm	1	
10	908035	Bolt 3/8-16 X 1 1/4	1	
11	915663	Nut 3/8-16 E.S.	1	
12	109417	Control Cam	1	
13	100656	Cam Bearing	1	
14	5701	E-Ring 1/2	1	
15	5985	Bushing	2	
16	920215	Special Washer	3	
17	100171	Spacer	1	
18	7602	Spring	1	
19	920038	Washer 5/16 U.S.	2	
20	915112	Eslok Nut 5/16-18	6	
21	6739	Trunnion	1	
22	920009	Washer 3/8 SAE	3	
23	932008	Cotter Pin 3/32 X 3/4	3	
24	920008	Washer 5/16 SAE	5	
25	109606	Rear Brake Rod	1	
26	109423	Front Brake Rod	1	
27	109407	Neutral Return Shaft	1	
28	900233	Carriage Bolt 3/8-16 X 3/4	2	
29	915113	Eslok Nut 3/8-16	2	
30	5701	E-Ring 1/2	1	
31	6949	Clutch Spring	1	
32	2534	Spring Clip	1	
33	908038	Bolt 3/8-16 X 2	1	
34	101765	Bushing	1	
35	102025	Spacer	1	
36	109406	Parking Brake Lever	1	
37	6820	Grip	1	
38	103628	Spring	1	
39	102809	Flange Locknut 3/8-16	1	
40	6264	Spacer	1	
41	106585	Block Pivot	6	
42	900041	Carriage Bolt 5/16-18 X 1 3/4	4	
43	920261	Special Washer	1	
44	109404	Brake Pedal	1	
45	109401	Shaft	1	
46	932025	Cotter Pin 5/32 X 1	1	



0641

Figure 6-3 Clutch, Brake and Speed Control Linkage

Item	Part Number	Description		
			Automatic	5-Speed
Figure 6-3 CLUTCH, BRAKE AND SPEED CONTROL LINKAGE				
1	109400	Lever	1	
2	106450	Spacer	2	
3	908034	Bolt 3/8-16 X 1	1	
4	915113	Eslok Nut 3/8-16	1	
5	8722	Knob #10-24	1	
6	8693	Knob	1	
7	911747	Screw #10-24 X 1 1/4	1	
8	109399	Rod	1	
9	920009	Washer 3/8 SAE	1	
10	932016	Cotter Pin 1/8 X 3/4	1	
11	915113	Eslok Nut 3/8-16	1	
12	MW8821	Idler Pulley	1	
13	109435	Idler Arm	1	
14	2844	Special Washer	1	
15	109444	Idler Pulley	1	
16	109437	Special Screw 3/8-16 X 2 3/4	1	
17	109432	Idler Arm Support	1	
18	900037	Carriage Bolt 5/16-18 X 3/4	2	
19	915112	Eslok Nut 5/16-18	2	
20	108177	Torsion Spring	1	
21	920083	Lockwasher 3/8	1	
22	915113	Nut 3/8-16	1	
23	908032	Bolt 3/8-16 X 3/4	1	
24	920009	Washer 3/8 SAE	1	
25	915113	Eslok Nut 3/8-16	1	

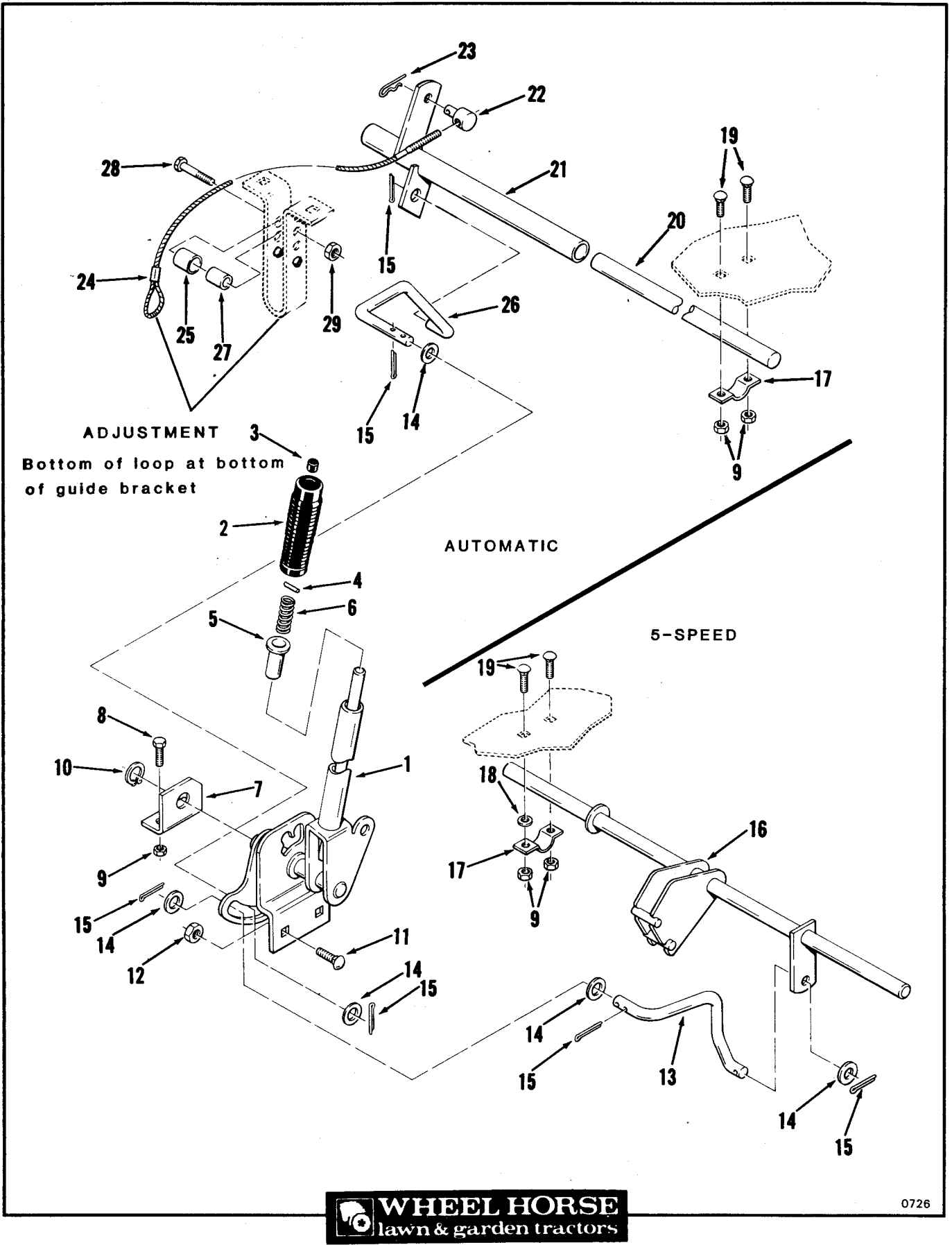
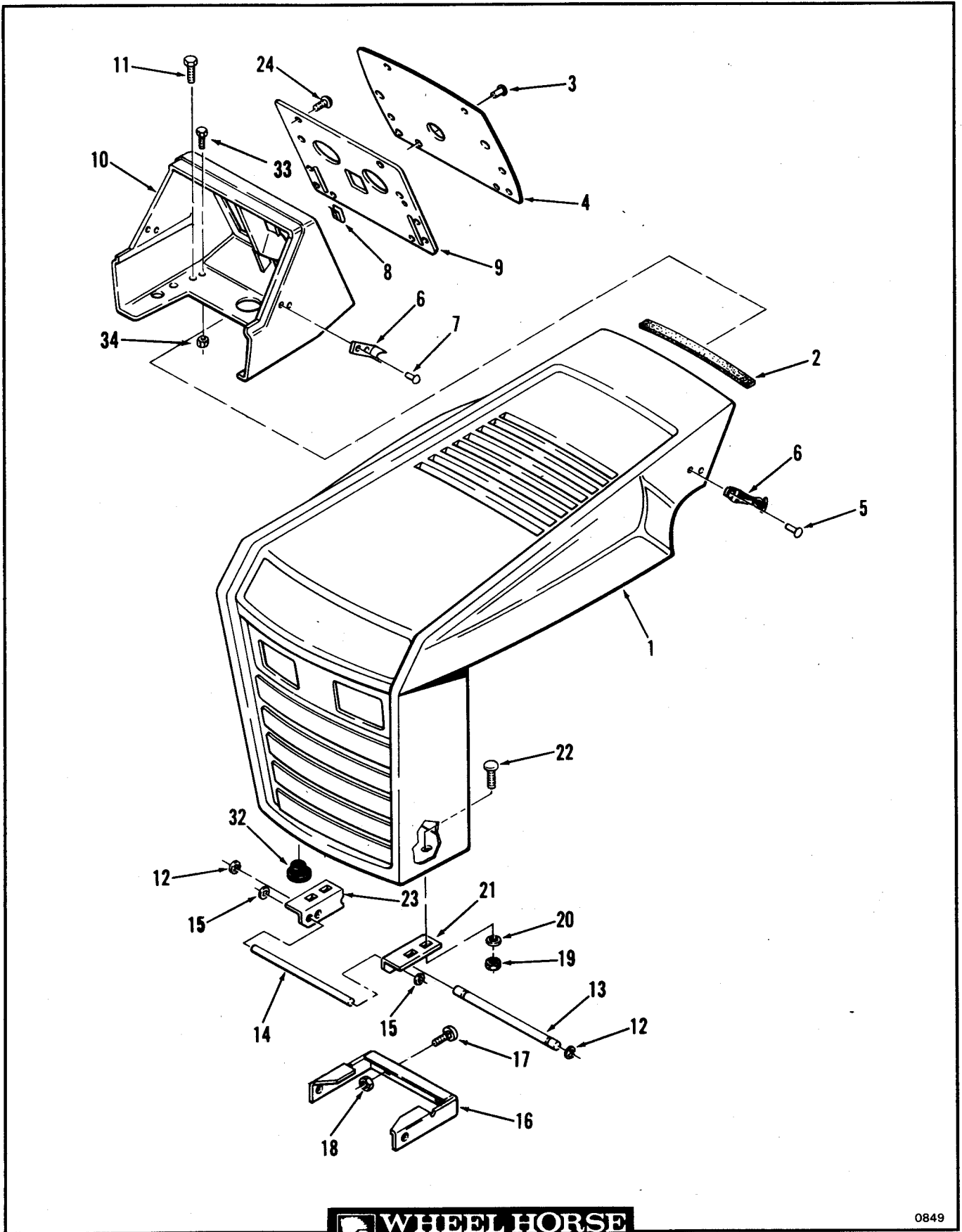


Figure 7-1

Attachment Lift

Item	Part Number	Description	5-Speed	
			Automatic	
Figure 7-1 ATTACHMENT LIFT				
1	109170	Lift Lever	1	1
2	6542	Grip	1	1
3	105316	Rod Cap	1	1
4	933148	Spirol Pin 1/8 X 1/2	1	1
5	8130	Spring Retainer	1	1
6	3624	Spring	1	1
7	109177	Bracket	1	1
8	908017	Bolt 5/16-18 X 3/4	2	2
9	915112	Eslok Nut 5/16-18	6	6
10	104822	Retaining Ring	1	1
11	900062	Carriage Bolt 3/8-16 X 3/4	2	2
12	915113	Eslok Nut 3/8-16	2	2
13	109336	Lift Rod		1
14	920011	Washer 1/2 SAE	2	3
15	932017	Cotter Pin 1/8 X 1	3	3
16	109333	Lift Shaft		1
17	106288	Clamp	2	2
18	920039	Washer 3/8 U.S.		2
19	900036	Carriage Bolt 5/16-18 X 5/8	4	4
20	109337	Lift Shaft	1	
21	109416	Lift Tube	1	
22	104524	Trunnion	1	
23	933505	Hairpin Cotter	1	
24	109609	Lift Cable	1	
25	108391	Spacer	1	
26	109598	Lift Rod	1	
27	106615	Spacer	1	
28	908036	Bolt 3/8-16 X 1 1/2	1	
29	109779	Jam Nut 3/8-16	1	



0849

Figure 8-1 Frame, Sheet Metal and Covers

Item	Part Number	Description	5-Speed	
			Automatic	
Figure 8-1				
FRAME, SHEET METAL AND COVERS				
1	108244	Hood	1	1
2	108134	Edge Trim	1	1
3	923795	Pop Rivet 3/16 Dia. X .402	4	4
4	108280	Plate - Dash Panel	1	1
5	923785	Pop Rivet - 1/8 Dia. X .294	4	4
6	106825	Hood Latch	2	2
7	923787	Pop Rivet - 1/8 Dia. X .419	2	2
8	5442	Speed Nut #10-16	4	4
9	108116	Back-Up Plate	1	1
10	109315	Console	1	1
11	926694	Washer HD. S.T. Bolt 5/16-18 X 5/8	2	2
12	105797	"E" Ring	2	2
13	108458	Rod - Pivot	1	1
14	108243	Rod - Pivot Stop	1	1
15	5466	Speed Nut	2	2
16	108764	Bracket - Hood Pivot	1	1
17	900038	Carriage Bolt 5/16-18 X 1	2	2
18	915112	Eslok Nut 5/16-18	2	2
19	915111	Eslok Nut 1/4-20	4	4
20	920007	Washer 1/4 SAE	4	4
21	108053	Bracket - Grille Pivot LH	1	1
22	900015	Carriage Bolt 1/4-20 X 3/4	4	4
23	108052	Bracket - Grille Pivot RH	1	1
24	102168	Screw #10-16 X 3/4	4	4
32	5667	Rubber Bumper	2	2
33	960152	Whizlok Bolt 1/4-20 X 5/8	2	2
34	915111	Eslok Nut 1/4-20	2	2

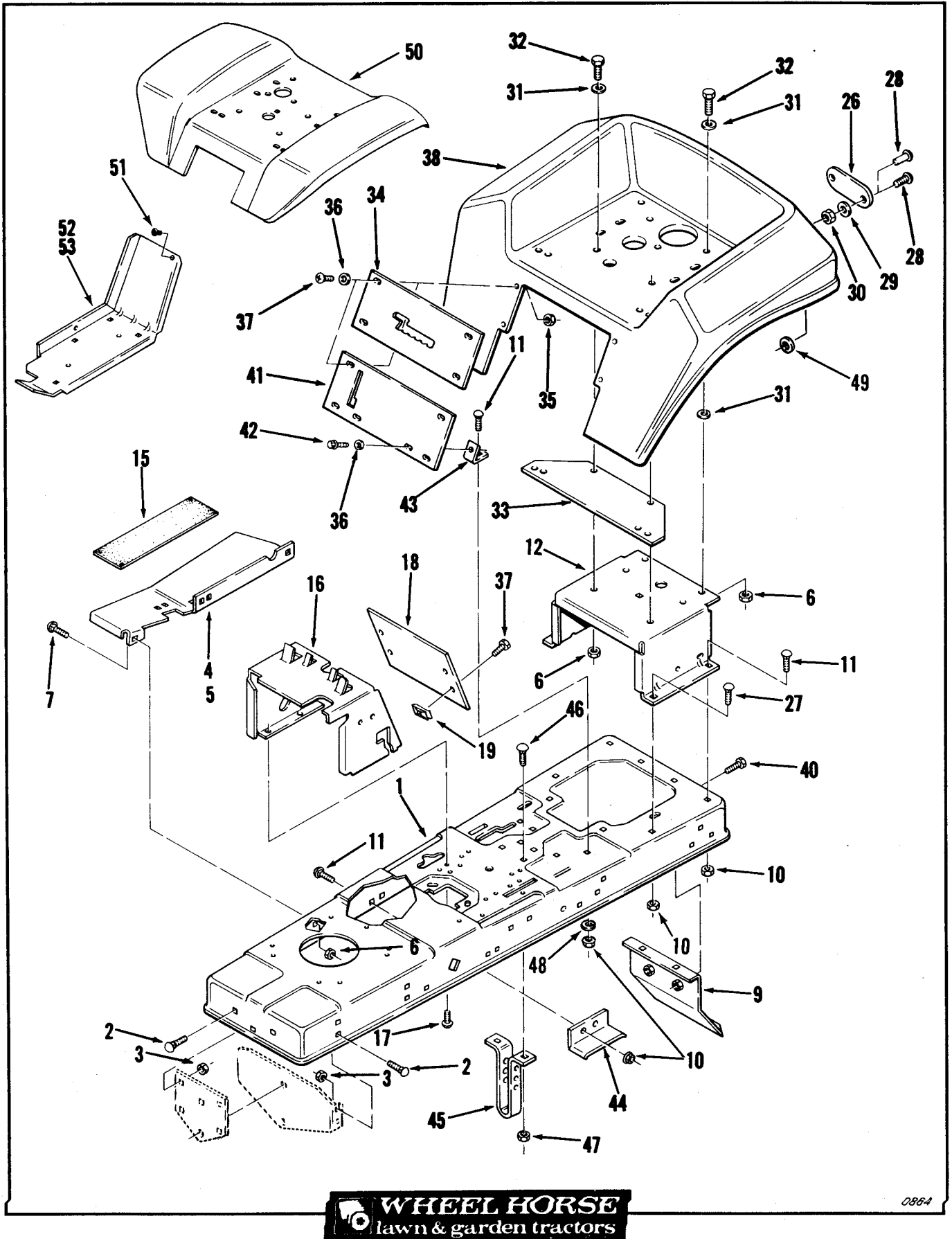
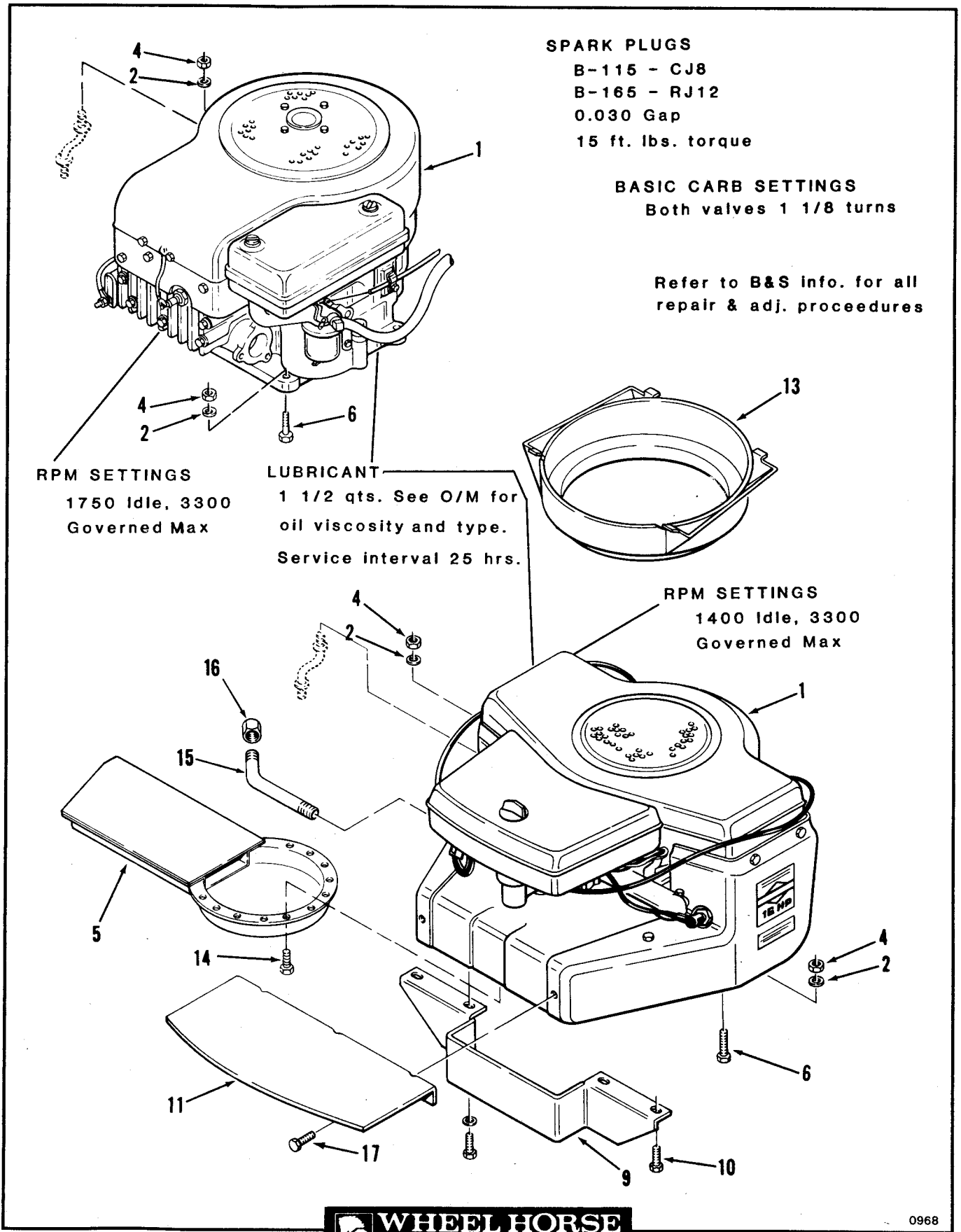


Figure 8-2

Frame, Sheet Metal and Covers

Item	Part Number	Description	5-Speed	
			Automatic	
Figure 8-2				
FRAME, SHEET METAL AND COVERS				
1	109392	Frame	1	
1	109156	Frame		1
2	900036	Carriage Bolt 5/16-18 X 5/8	7	7
3	915112	Esllok Nut 5/16-18	7	7
4	108220	Footrest RH	1	
5	108221	Footrest LH	1	
6	915112	Esllok Nut 5/16-18	8	12
7	900036	Carriage Bolt 5/16-18 X 5/8	8	8
9	109349	Hitch - Drawbar	1	1
10	915112	Esllok Nut 5/16-18	8	4
11	900036	Carriage Bolt 5/16-18 X 5/8	7	3
11	900038	Carriage Bolt 5/16-18 X 1	1	
12	108249	Support - Seat		1
12	109425	Support - Seat	1	
15	106488	Pad - Footrest	2	2
16	109164	Hoodstand	1	1
17	926694	Washer HD. S.T. Screw 5/16-18 X 5/8	4	4
18	109198	Hoodstand Plate	1	1
19	107069	Speednut 1/4-20	4	4
26	108547	Reflector - Rear	2	2
27	900037	Carriage Bolt 5/16-18 X 3/4		1
28	910808	Screw #10-32 X 5/8 (Early Production)	4	4
28	109193	Pop Rivet 3/16 X .570 Aluminum (Later Production)	4	4
29	920079	Lockwasher #10 (Early Production)	4	4
30	915551	Nut #10-32 (Early Production)	4	4
31	2844	Special Washer	6	6
32	908020	Bolt 5/16-18 X 1 1/4		4
33	109386	Seat Plate	1	1
34	109457	Shift Plate		1
35	915111	Esllok Nut 1/4-20	4	4
36	920007	Washer 1/4 SAE	4	4
37	910837	Pan HD. Screw 1/4-20 X 5/8	8	8
38	107796	Fender	1	
40	908016	Bolt 5/16-18 X 5/8	2	2
41	109398	Front Fender Plate	1	
42	926671	Washer HD. S.T. Screw 1/4-20 X 1/2	2	
43	109421	Fender Bracket	2	
44	109451	Belt Support	1	
45	109608	Mower Guide	1	
46	900062	Carriage Bolt 3/8-16 X 3/4	2	
47	915113	Esllok Nut 3/8-16	2	
48	920082	Lockwasher 5/16	2	
49	920004	Washer #8	4	
50	109126	Fender		1
51	103887	Rubber Bumper		2
52	109159	Footrest RH		1
53	109158	Footrest LH		1



0968

Figure 9-1 Engine

Item	Part Number	Description	5-Speed	
			Automatic	
		Figure 9-1 ENGINE		
1	110057*	Engine - 11HP - B&S Model 253707, Type 0131-01 - B-115 Only ..	X	X
1	110056*	Engine - 16HP - B&S Model 402707, Type 0130-05 - B-165 Only ..	X	X
2	920008	Washer 5/16 SAE.....	5	5
4	915112	Eslok Nut 5/16-18	4	4
5	108989	Exhaust Deflector - B-165 Only.....	1	1
6	908021	Bolt 5/16-18 X 1 1/2	3	3
6	908022	Bolt 5/16-18 X 1 3/4	1	1
9	108552	Duct - Rear B-165 Only	1	1
10	908001	Bolt 1/4-20 X 1/2 B-165 Only	2	2
11	108553	Duct - Front B-165 Only	1	1
13	108583	Duct - Hood Air Intake B-165 Only	1	1
14	108993	Bolt 8-32 X 3/8 - B-165 Only.....	4	4
15	109544	Drain Pipe - B-165 Only.....	1	1
16	5224	Cap 3/8 NPT - B-165 Only	1	1
17	911684	Screw #14-10 X 3/4 - B-165 Only	2	2
<p>*Order Replacement Parts or Complete Assembly Through Manufacturer's Distribution System, Using Model/Spec. Number Shown.</p> <p>WHEEL HORSE Part Number Is Listed For Cross-Reference Purposes Only; Item <u>Is Not Available</u> Through WHEEL HORSE.</p>				

Item	Part Number	Description	5-Speed	
			Automatic	
<p>Figure 10-1 FUEL AND EXHAUST SYSTEMS</p>				
1	108548	Throttle Control - B-115 Only	1	1
1	108240	Throttle Control - B-165 Only	1	1
2	108241	Choke Control - B-165 Only	1	1
2	108549	Choke Control - B-115 Only	1	1
3	923795	Pop Rivet 3/16 Dia. X .402	X	X
4	108509	Knob - Throttle	1	1
5	108510	Knob - Choke	1	1
9	109960	Hold Down Wire	1	1
10	107788	Hold Down Spring	1	1
11	108011	Gasoline Cap	1	1
17	108898	Hose Clamp	2	2
20	104048	Shut-Off Valve	1	1
21	109961	Fuel Tank Assy With Rubber Seal and Valve	1	1
23	108614	Muffler B-115 Only	1	1
24	908001	Bolt 1/4-20 X 1/2 B-115 Only	1	1
25	920007	Washer 1/4 SAE B-115 Only	1	1
26	104047	Rubber Bushing	1	1
31	9147	Fuel Hose 14.0 in. (35.6 cm) B-165 Only	1	1
31	105442	Fuel Hose 18 in. (45.7 cm) B-115 Only	1	1
<p>NOTE: MUFFLER SUPPLIED BY ENGINE MANUFACTURER ON B-165 MODELS.</p>				

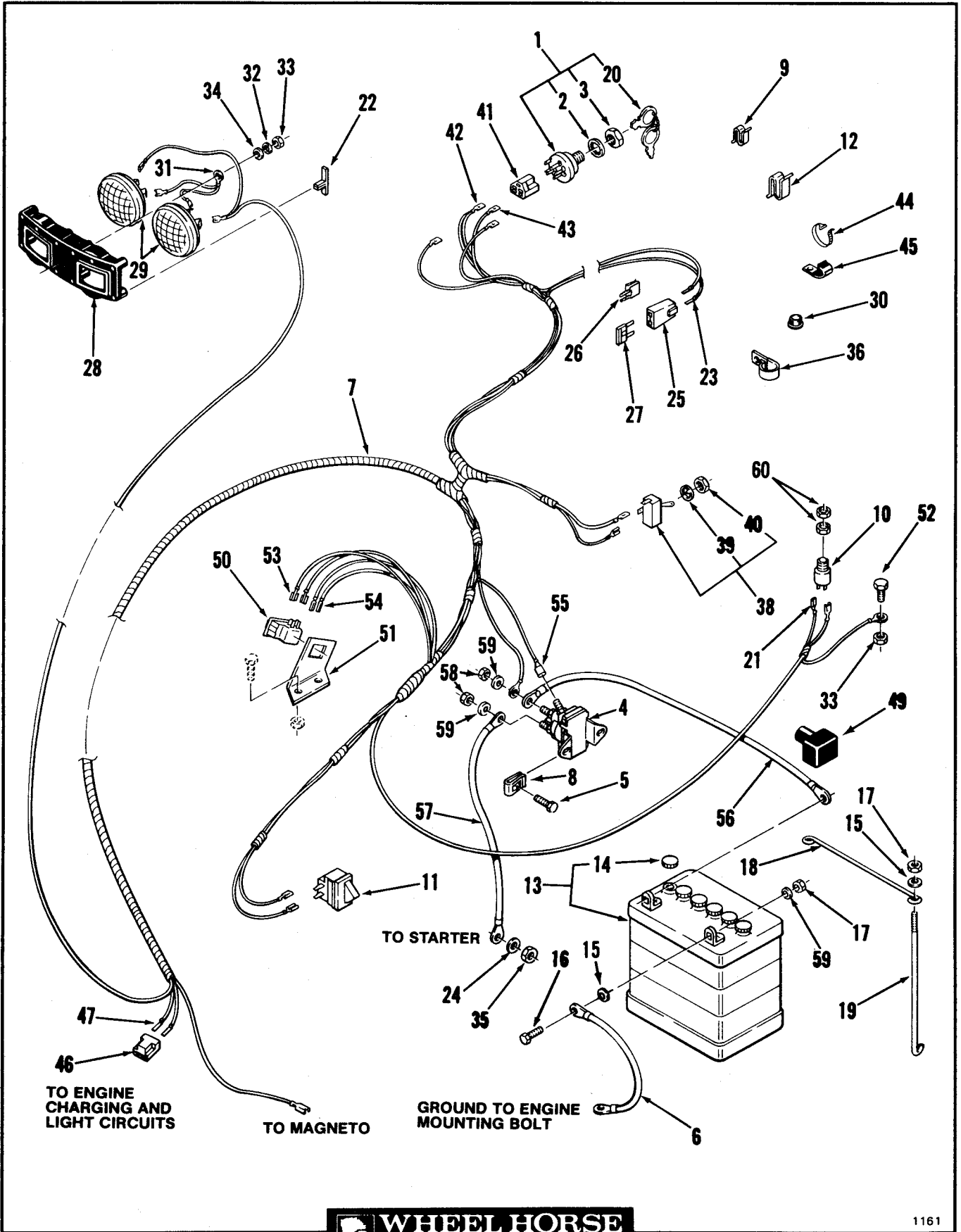


Figure 11-1 Electrical System

Item	Part Number	Description	5-Speed	
			Automatic	
Figure 11-1				
ELECTRICAL SYSTEM				
1	103991	Ignition Switch Assy	1	1
2	920160	Lockwasher 5/8	1	1
3	101884	Special Nut	1	1
4	109605	Solenoid	1	1
5	960151	Whizlok Bolt 1/4-20 X 1/2	2	2
6	108281	Cable - Battery To Ground 10.0 in. (25.4 cm)	1	1
7	109341	Wiring Harness Assy - B-165 Only	1	1
7	109340	Wiring Harness Assy - B-115 Only	1	1
8	106370	Speed Clip 1/4-20	2	2
9	3023	Clip 1/16	5	5
10	109328	Seat Switch	1	1
11	103480	Interlock Switch	1	1
12	519337	Clip 1/8	1	1
13	104962	Battery	1	1
14	100438	Cap	6	6
15	920007	Washer 1/4 SAE	4	4
16	908003	Bolt 1/4-20 X 3/4	2	2
17	915111	Eslok Nut 1/4-20	4	4
18	105504	Rod - Hold Down	1	1
19	109547	Hook - Battery Strap	2	2
20	7262	Ignition Key - Set of 2	1	1
21	8765	Female Terminal - Part of 7	2	2
22	108911	Spring Clip	8	8
23	108995	Fuse Terminal - Part of 7	2	2
24	920081	Lockwasher 1/4 SAE	1	1
25	109117	Fuse Body - Part of 7	1	1
26	109445	Fuse Body Clip	1	1
27	109355	Fuse 15 AMP	1	1
28	108036	Headlight Retainer	1	1
29	102881	Headlight	2	2

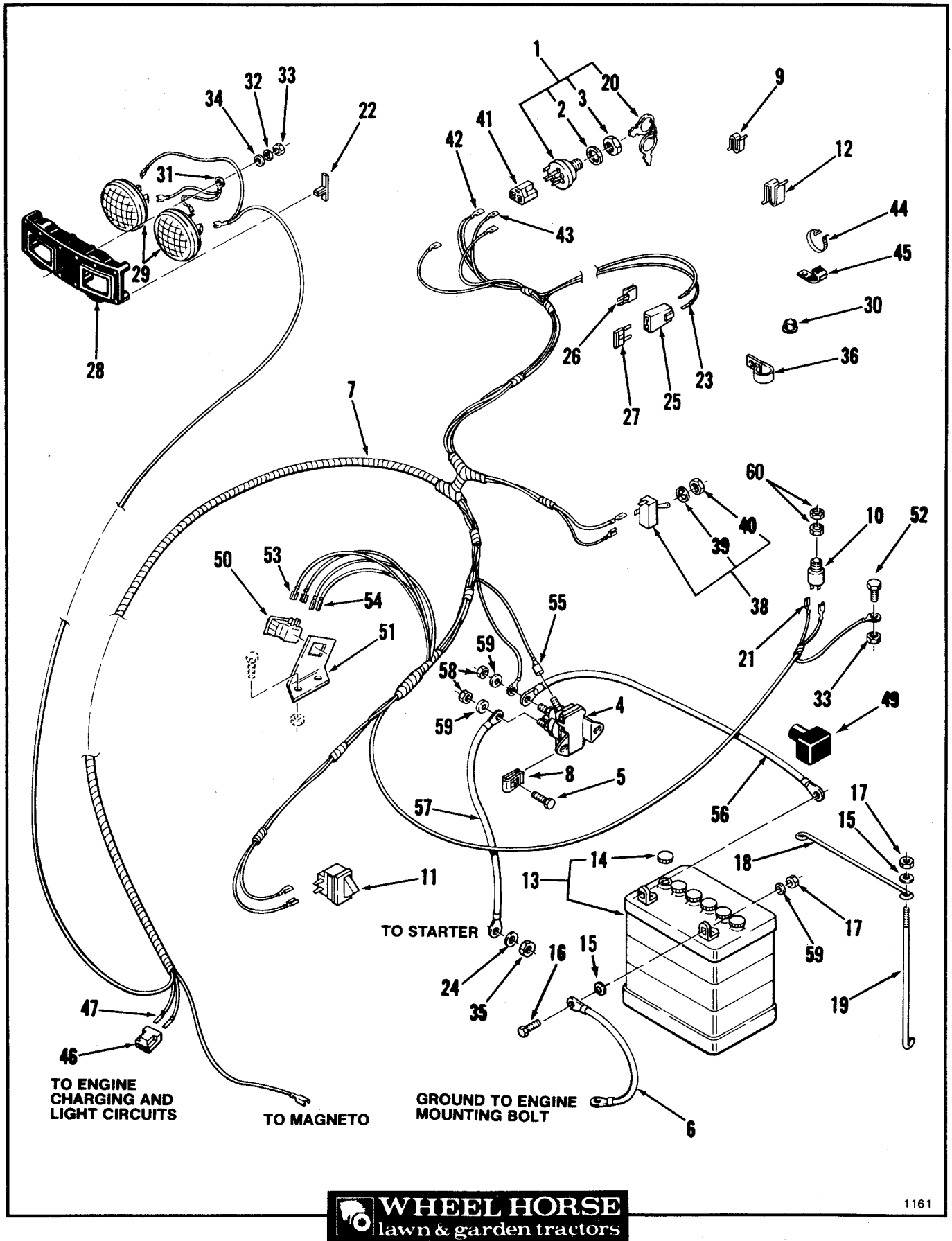


Figure 11-1

Electrical System

Item	Part Number	Description	5-Speed	
			Automatic	
Figure 11-1				
ELECTRICAL SYSTEM (Cont'd)				
30	938018	Bushing	1	1
31	108130	Headlight Ground Wire	1	1
32	920008	Washer 5/16 SAE	1	1
33	915112	Eslok Nut 5/16-18	1	1
34	920155	Lockwasher 5/16 Int. Tooth	1	1
35	915234	Nut 1/4-20	1	1
36	105490	Clamp B-165 Only	2	2
38	102138	Light Switch	1	1
39	102950	Locking Ring	1	1
40	8786	Special Nut	2	2
41	105302	Conn - Body - Ign. Sw. - Part of 7	1	1
42	105306	Female Terminal - Part of 7	1	1
43	102651	Female Terminal - Part of 7	3	3
44	518017	Cable Tie	1	1
45	8830	Clip	2	2
46	518151	Conn - Body - Part of 7	1	1
47	518074	Socket Conn - Part of 7	2	2
49	109553	Terminal Cover	1	1
50	109327	PTO Interlock Switch	1	1
51	109178	Bracket	1	1
52	908016	Bolt 5/16-18 X 5/8	1	1
53	518077	Female Terminal 0.187 - Part of 7	2	2
54	109378	Female Terminal 0.110 - Part of 7	2	2
55	518246	Push-On Terminal - Part of 7	1	1
56	109361	Battery To Solenoid Cable 14.0 in. (35.6 cm)	1	1
57	109362	Starter To Solenoid Cable 23.0 in. (58.4 cm) B-115 Only	1	1
57	109363	Starter To Solenoid Cable 16.0 in. (40.6 cm) B-165 Only	1	1
58	915234	Jam Nut 1/4-20	2	2
59	920081	Lockwasher 1/4	3	3
60	105805	Special Nut	2	2

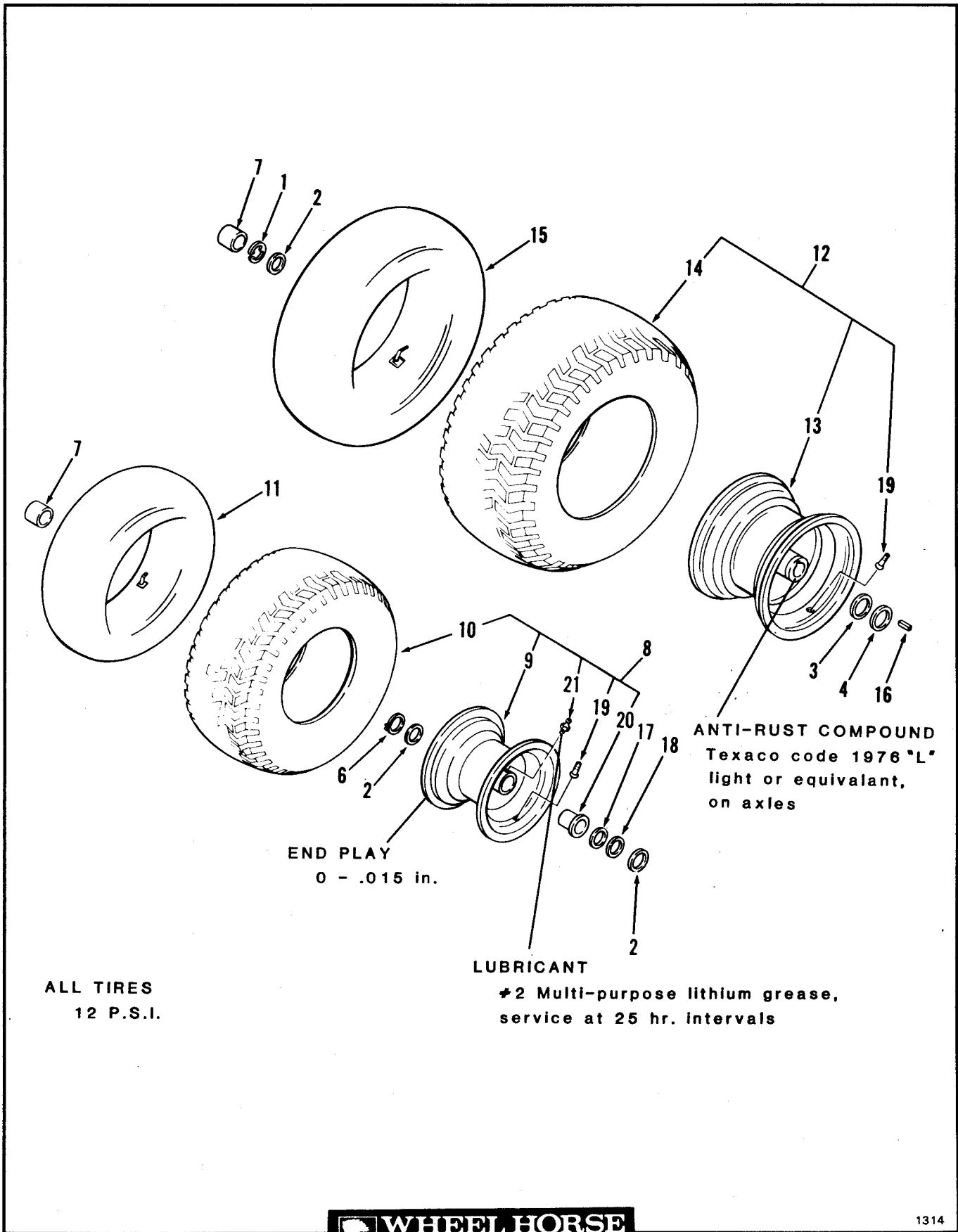


Figure 13-1 Wheels and Tires

Item	Part Number	Description	5-Speed	
			Automatic	
Figure 13-1 WHEELS AND TIRES				
1	104636	"E" Ring		2
1	5700	"E" Ring 1 Inch	2	
2	109262	Special Washer - Hubcap 1 5/16 ID	4	6
2	920239	Special Washer - Hubcap 1 1/2 ID	2	
3	5210	Shim Washer .015		X
3	920252	Shim Washer .015	X	
4	1278	Shim Washer .050		X
4	920251	Shim Washer .050	X	
6	104822	Retaining Ring 3/4	2	2
7	109261	Hub Cap (Black) 1 5/16 ID	2	4
7	109154	Hub Cap (Black) 1 1/2 ID	2	
8	108557	Assy - Wheel & Tire Front	2	2
9	108556	Front Wheel - Includes Reference Numbers 19, 20, 21	1	1
10	104307	Front Tire 13 X 6.50-6	1	1
11	101779	Front Tube - Service Only	1	1
12	108805	Assy - Wheel & Tire Rear		2
12	109391	Assy - Wheel & Tire Rear	2	
13	108806	Rear Wheel		1
13	109412	Rear Wheel	1	
14	108807	Rear Tire 20 X 10.0-10.0	1	1
15	100040	Rear Tube - Service Only	1	1
16	1120	Sq Key 3/16 X 1 3/4		2
16	2590	Sq Key 1/4 X 2	2	
17	1278	Shim Washer .050	X	X
18	5210	Shim Washer .015	X	X
19	5108	Valve Stem (Tubeless Tire)	1	1
20	100166	Flange Bushing	2	2
21	109500	Grease Fitting	1	1

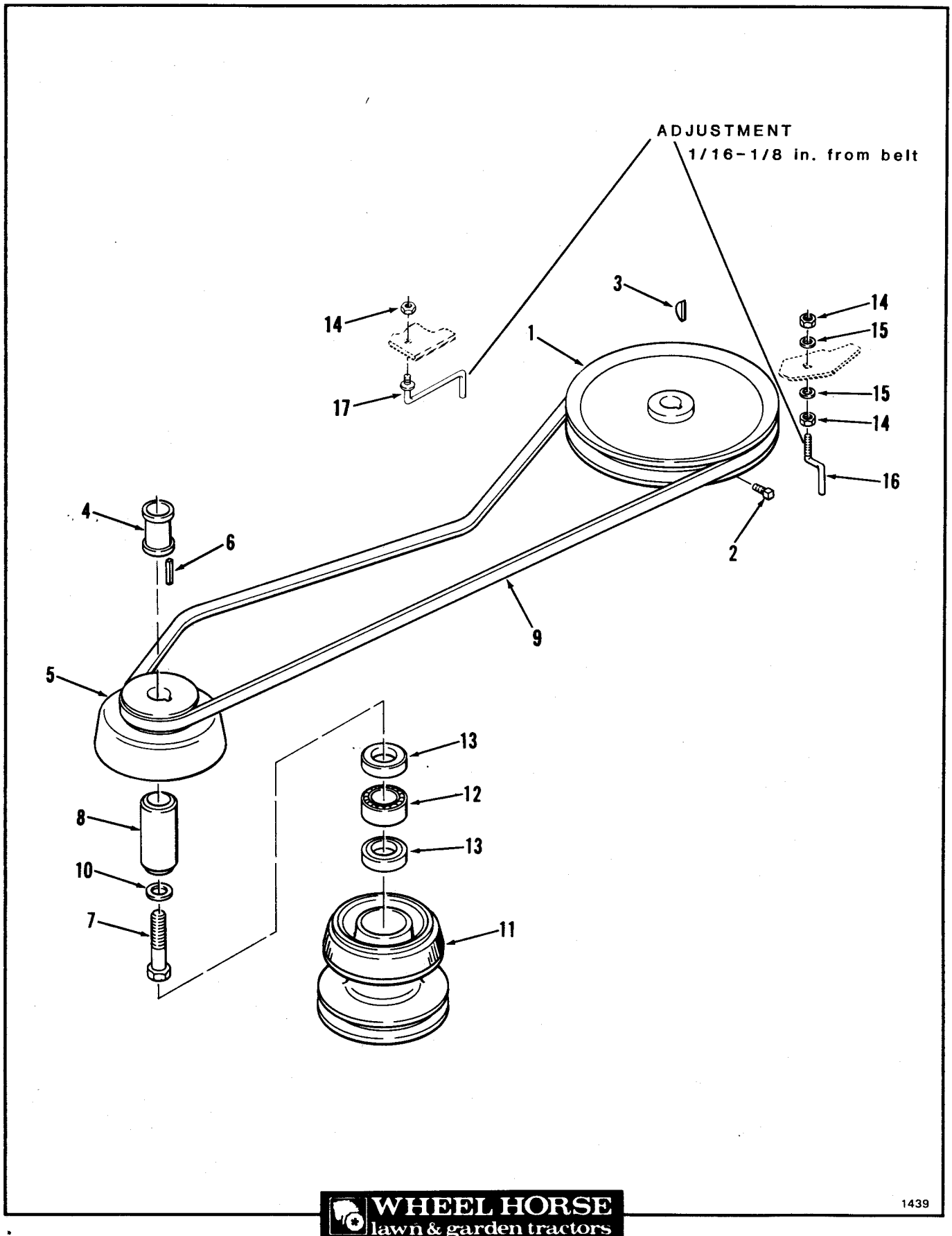


Figure 14-1

Drive Belt and Pulleys - 5 Speed Models

Item	Part Number	Description	5-Speed	
			Automatic	
Figure 14-1				
DRIVE BELT AND PULLEYS - 5 SPEED MODELS				
1	108790	Pulley - Transmission		1
2	909540	Sq HD Set Scr. 5/16-18 X 1/2 Patchlock		2
3	937225	Hi-Pro Key #9		1
4	106563	Tube Spacer - B-115 Only		1
4	109731	Tube Spacer - B-165 Only		1
5	108408	Pulley - Engine		1
6	105453	Sq Key 1/4 X 5/8		1
7	908195	Eslok Bolt 7/16-20 X 1		1
8	106564	Bearing Race		1
9	108427	Belt - Transmission Drive		1
10	107750	Special Washer		1
11	106565	Assy - Pulley Mwr Dr		1
12	106769	Needle Bearing		1
13	6663	Oil Seal		2
14	915112	Eslok Nut 5/16-18		3
15	920008	Washer 5/16		2
16	108397	Belt Guide		1
17	109041	Belt Guide		1

Item	Part Number	Description		
			Automatic	5-Speed
Figure 14-2				
DRIVE BELT AND PULLEYS - AUTOMATIC MODELS				
1	109387	Transmission Pulley	1	
2	937082	Woodruff Key 1/8 X 1/2	1	
3	109389	Fan Blade	1	
4	109798	Fan Spacer	1	
5	103995	Washer	1	
6	908005	Nylok Bolt 1/4-20 X 1	1	
7	109428	Drive Belt - B-115 Only	1	
7	109427	Drive Belt - B-165 Only	1	
8	109429	Pulley Bracket	1	
9	109414	Spacer	1	
10	105874	Flat Idler Pulley	1	
11	8205	Idler Pulley	1	
12	900065	Carriage Bolt 3/8-16 X 1 1/2	1	
13	920009	Washer 3/8 SAE	1	
14	915113	Eslok Nut 3/8-16	2	
15	6149	Belt Retainer	1	
16	106563	Tube Spacer - B-115 Only	1	
16	109731	Tube Spacer - B-165 Only	1	
17	108408	Engine Pulley	1	
18	105453	Sq Key 1/4 X 5/8	1	
19	908195	Eslok Bolt 7/16-20 X 1	1	
20	106564	Bearing Race	1	
21	107750	Special Washer	1	
22	106565	Mower Drive Pulley	1	
23	106769	Needle Bearing	1	
24	6663	Oil Seal	2	
25	920011	Washer 1/2 SAE	1	
26	920261	Special Washer	1	

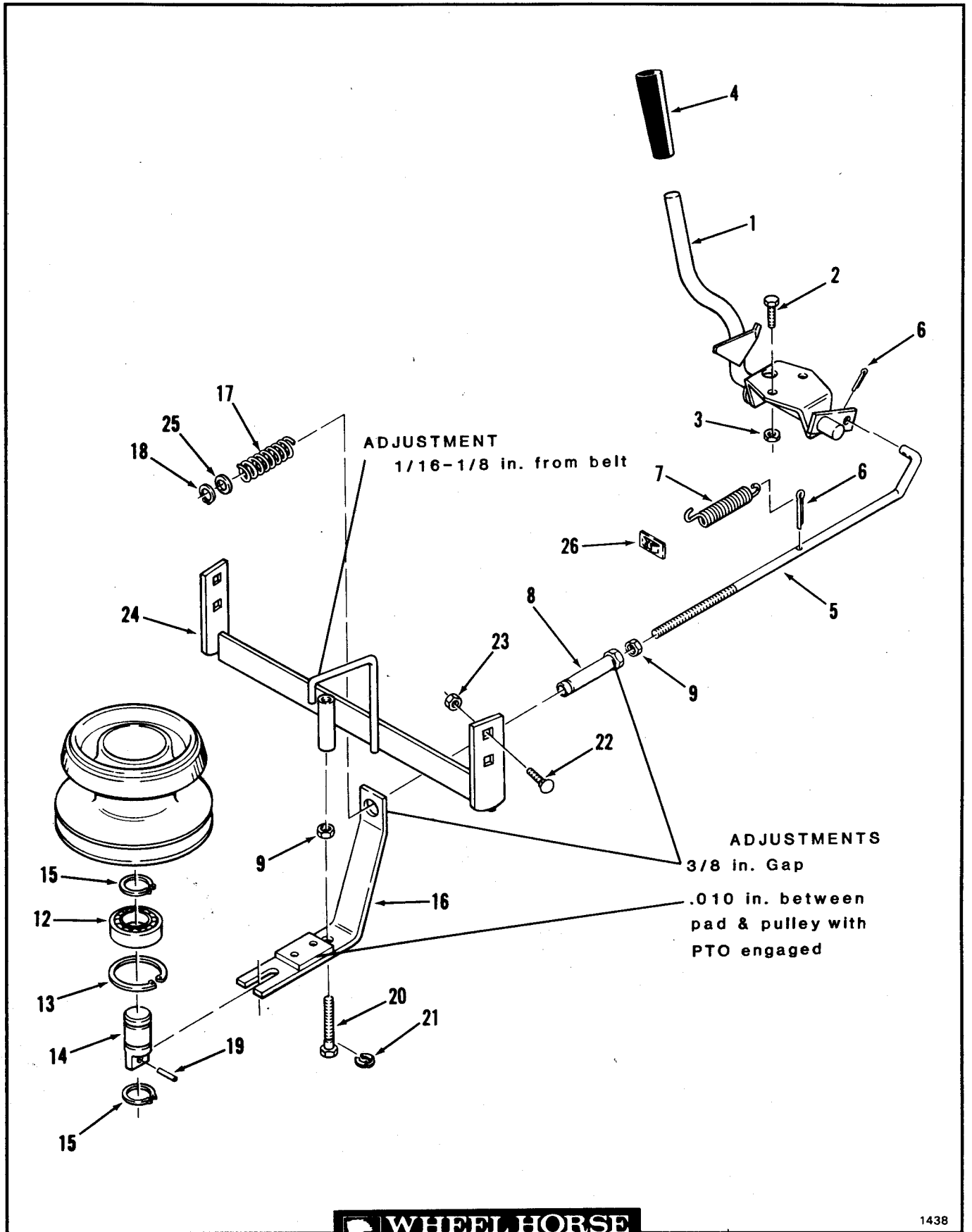
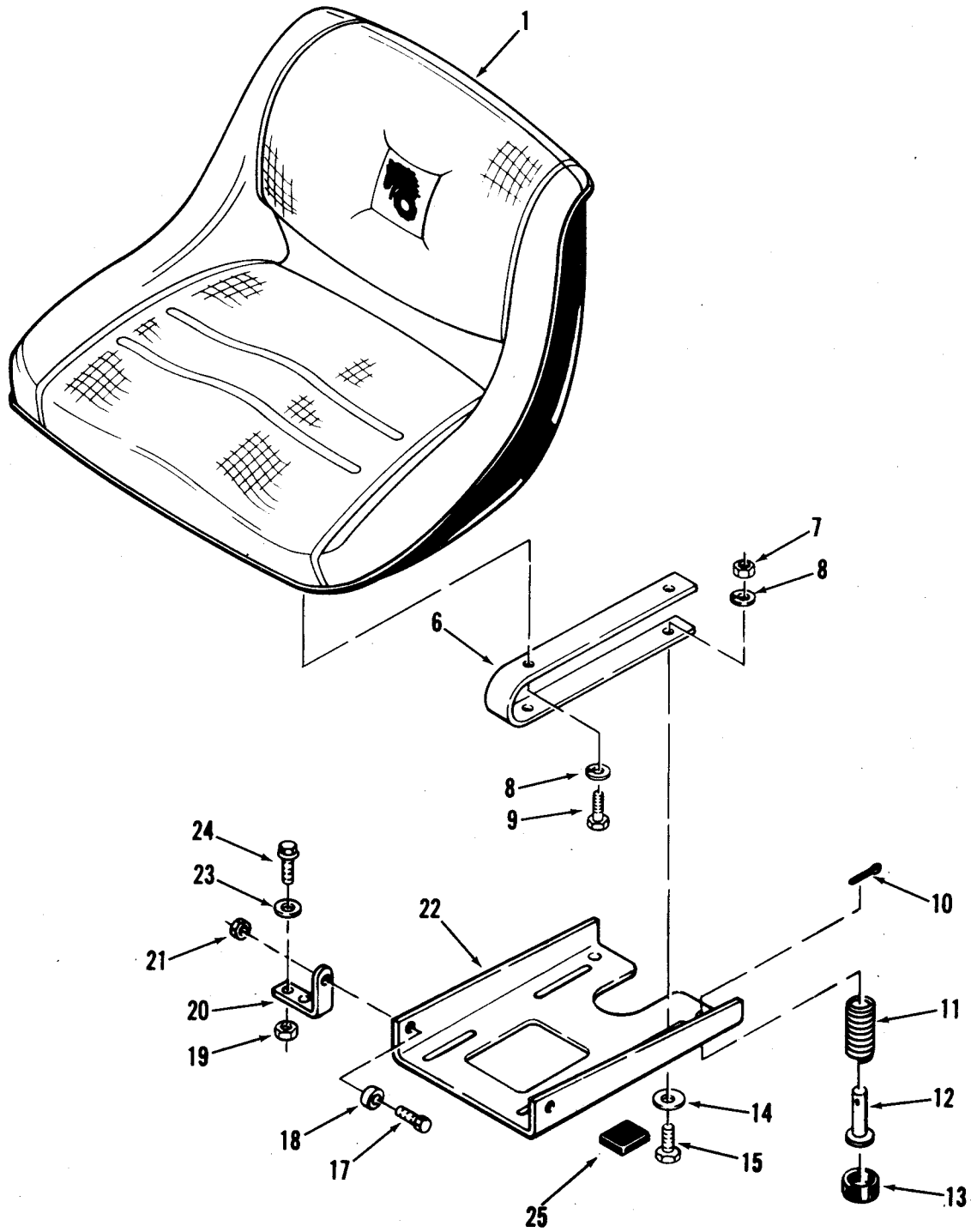


Figure 14-3

PTO Clutch

Item	Part Number	Description	5-Speed	
			Automatic	
		Figure 14-3 PTO CLUTCH		
1	109179	PTO Clutch Lever	1	1
2	908016	Bolt 5/16-18 X 5/8	2	2
3	915112	Eslok Nut 5/15-18	2	2
4	9038	Grip	1	1
5	108426	PTO Clutch Rod	1	1
6	932008	Cotter Pin 3/32 X 3/4	2	2
7	1014	Spring	1	1
8	107818	Threaded Spacer - PTO Clutch	1	1
9	915235	Jam Nut 5/16-18	2	2
12	109842	Ball Bearing	1	1
13	936032	Int Snap Ring 1 3/4	1	1
14	107747	Shaft - Clutch Hsg	1	1
15	936125	Ext Snap Ring 3/4	2	2
16	109346	Clutch Brake Bracket	1	1
17	106573	Spring - Clutch - B-115 Only	1	1
17	109832	Spring - Clutch - B-165 Only	1	1
18	107825	Snap Ring - Special	1	1
19	933198	Spirol Pin 7/32 X 7/8	1	1
20	107748	Screw - Clutch Adjust	1	1
21	107772	Retaining Ring	1	1
22	900037	Carriage Bolt 5/16-18 X 3/4	4	4
23	915112	Eslok Nut 5/16-18	4	4
24	108411	Clutch Mounting Bracket B-165 Only	1	1
24	108459	Clutch Mounting Bracket B-115 Only	1	1
25	920259	Special Washer	1	1
26	7721	Speed Nut	1	1



1534

Figure 15-1 Seat and Suspension

Item	Part Number	Description	5-Speed	
			Automatic	
		Figure 15-1		
		SEAT AND SUSPENSION		
1	105259	Seat	1	1
6	103145	Seat Spring	2	2
7	915112	Nut 5/16-18	4	4
8	920082	Lockwasher 5/16	8	8
9	908018	Bolt 5/16-18 X 7/8	4	4
10	932008	Cotter Pin 3/32 X 3/4	2	2
11	104841	Spring	2	2
12	106449	Pin	2	2
13	106331	Rubber Cap	2	2
14	920008	Washer 5/16 SAE	4	4
15	908019	Bolt 5/16-18 X 1	4	4
17	908018	Bolt 5/16-18 X 7/8	2	2
18	105503	Bushing	2	2
19	915112	Eslok Nut 5/16-18	4	4
20	105524	Pivot Bracket	2	2
21	915112	Eslok Nut 5/16-18	2	2
22	108681	Seat Pivot Plate	1	1
23	920008	Washer 5/16 SAE	4	4
24	908020	Bolt 5/16-18 X 1 1/4	4	4
25	109597	Bumper	1	1

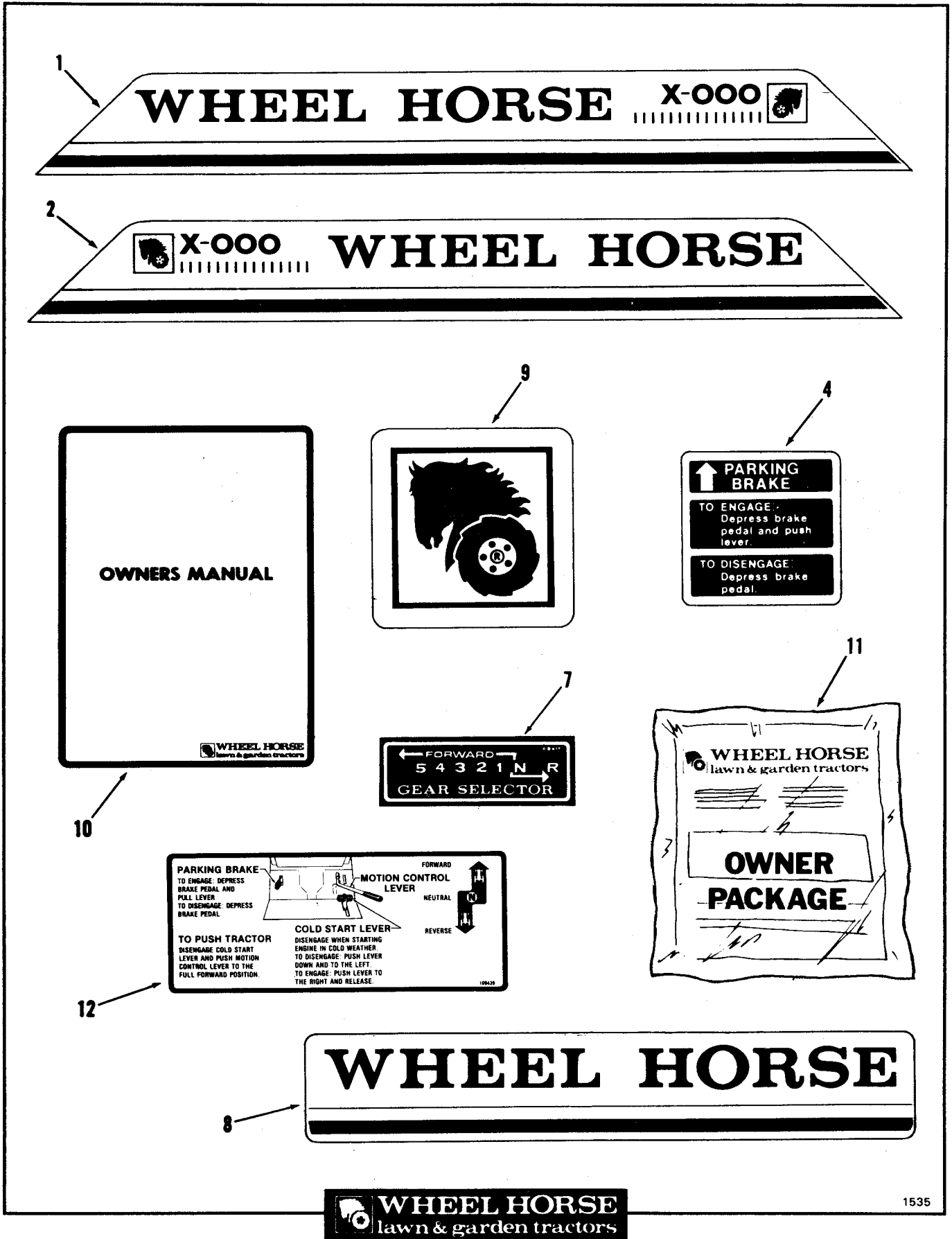
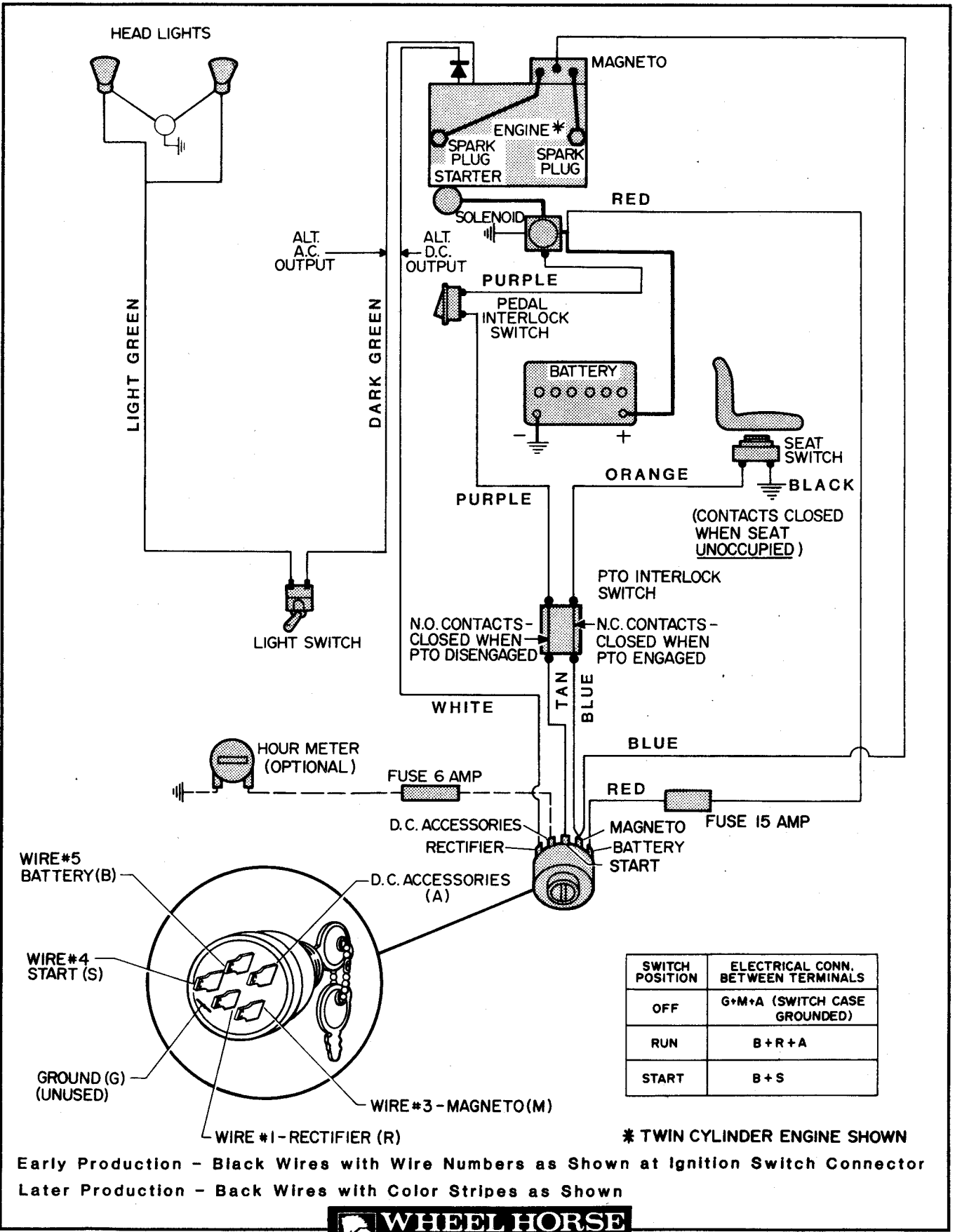


Figure 15-2

Decals, Miscellaneous

Item	Part Number	Description	5-Speed	
			Automatic	
Figure 15-2 DECALS, MISCELLANEOUS				
1	108546	Decal - Hood RH B-115 5-Speed Only		XXX
1	109442	Decal - Hood RH B-115 Automatic Only	XXX	
1	108264	Decal - Hood RH B-165 5-Speed Only		XXX
1	109440	Decal - Hood RH B-165 Automatic Only	XXX	
2	108545	Decal - Hood LH B-115 5-Speed Only		XXX
2	109443	Decal - Hood LH B-115 Automatic Only	XXX	
2	108263	Decal - Hood LH B-165 5-Speed Only		XXX
2	109441	Decal - Hood LH B-165 Automatic Only	XXX	
4	106546	Decal - Parking Brake		1
7	108417	Decal - 5-Spd Shift		1
8	108580	Decal - Rear	1	1
9	251053	Decal - Hood	1	1
10	810302R1	Owner's Manual	XXX	XXX
11	803389	New Tractor Loose Parts Package B-115 5-Speed Only		XXX
11	803392	New Tractor Loose Parts Package B-115 Automatic Only	XXX	
11	803391	New Tractor Loose Parts Package B-165 Automatic Only	XXX	
11	803390	New Tractor Loose Parts Package B-165 5-Speed Only		XXX
12	109439	Decal - Speed Control	1	



SWITCH POSITION	ELECTRICAL CONN. BETWEEN TERMINALS
OFF	G+M+A (SWITCH CASE GROUNDED)
RUN	B+R+A
START	B+S

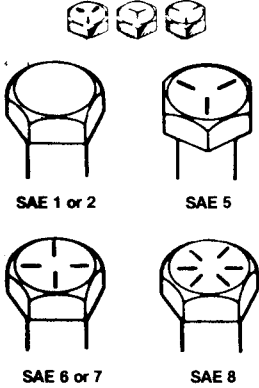
* TWIN CYLINDER ENGINE SHOWN

Early Production - Black Wires with Wire Numbers as Shown at Ignition Switch Connector
 Later Production - Back Wires with Color Stripes as Shown



Figure 17-1 Wiring Diagram

TORQUE SPECIFICATIONS

BOLT HEAD MARKINGS	BOLT BODY SIZE In. - Thread	SAE GRADE 1 or 2		SAE GRADE 5		SAE GRADE 6 or 7		SAE GRADE 8	
		Torque		Torque		Torque		Torque	
		Ft-Lb	Nm	Ft-Lb	Nm	Ft-Lb	Nm	Ft-Lb	Nm
<p>Manufacturer's marks may vary. Three-line markings on heads shown below, for example, indicate SAE Grade 5.</p>  <p>SAE 1 or 2 SAE 5</p> <p>SAE 6 or 7 SAE 8</p>	1/4-20 -28	5 6	6.8 8.1	8 10	10.8 13.6	10 13.6	12 14	16.2 19.0	
	5/16-18 -24	11 13	15.0 17.6	17 19	23.0 25.8	19 25.8	24 27	32.5 36.6	
	3/8-16 -24	18 20	24.4 27.1	31 35	42.0 47.5	34 46.1	44 49	59.7 66.4	
	7/16-14 -20	28 30	38.0 40.7	49 55	66.4 74.6	55 74.6	70 78	95.0 105.8	
	1/2-13 -20	39 41	52.9 55.6	75 85	101.7 115.2	85 115.2	105 120	142.4 162.7	
	9/16-12 -18	51 55	69.1 74.6	110 120	149.1 162.7	120 162.7	155 170	210.1 230.5	
	5/8-11 -18	83 95	112.5 128.8	150 170	203.3 230.5	167 226.4	210 240	284.7 325.4	
	3/4-10 -16	105 115	142.4 155.9	270 295	366.1 400.0	280 379.6	375 420	508.4 569.4	
	7/8- 9 -14	160 175	216.9 237.3	395 435	535.5 589.8	440 596.6	605 675	820.3 915.2	
	1- 8 -14	235 250	318.7 339.0	590 660	799.9 894.8	660 894.8	910 990	1233.8 1342.2	

FASTENERS

- All hex bolts GRADE 5 minimum, GRADE 8 used as noted.
- All carriage bolts GRADE 1 unless otherwise noted.
- In lieu of ESLOK or E.S. nuts, use LOCTITE or lock washers with free running nuts.

PAINT

- Red Enamel — 6 cans, order #8-0311
- Red Enamel — Quart can #5340 (Non-aerosol) *
- Beige Enamel — 6 cans, order #8-0321
- Black Enamel — 6 cans, order #8-0334
- Pewter Enamel — 6 cans, order #8-0335
- White Enamel — 6 cans, order #8-0336

* Thinning — use zylol (slow drying time) or toluol (fast drying time)

